



FACE
ARTISTRY
Professional Cosmetics
by Anjanette



To Order Please Contact:

Face Artistry By Anjanette
919.623.4433
P.O. Box 61374
Raleigh, NC 27661
FaceArtistryCosmetics.com



foundations

powders

pro palettes

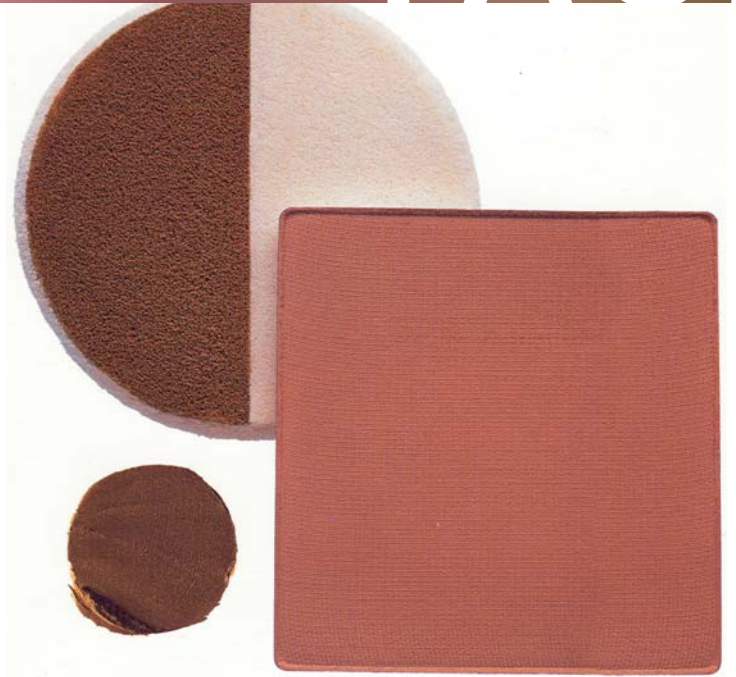
FACE

correctors

primers

shimmer

shine



FOUNDATIONS



matte

Hypoallergenic. Oil-free liquid imparts a flawless, soft-matte finish and moderate coverage. Non-drying formula continually conditions the complexion. Normal to oily skin.



light diffusing

SPF 8. Hypoallergenic. Innovative liquid creates a younger appearance instantly. Deflects light away from fine lines and wrinkles. Smooths imperfections with special coated micro-pigments that virtually float over skin without settling into lines and creases. Light-diffusing finish and moderate coverage. Normal to dry skin.



maximum

Hypoallergenic. Complete coverage that feels weightless. Leaves a velvety matte finish. Transfer-resistant formula is rich in antioxidant Vitamins C and E. All skin types.



stick

SPF 8. Hypoallergenic. Creme foundation in an easy-to-use stick. Rich, creamy finish with buildable coverage from sheer to opaque. Simple, dab-and-blend application. Protects skin from UV damage and provides continuous conditioning. All skin types.



FOUNDATIONS



perfect protection

Moisture Tint SPF 15. Sheer, sporty makeup with minimal coverage, yet strong protection. Free radical scavengers Vitamins E and C, plus a full spectrum sunscreen help prevent damage. Hydrating botanicals and Sodium Hyaluronate replenish and



lift & tint

Firming Moisture Creme SPF 15. Firming, line-smoothing with a hint of color in a lightweight, easy-wear creme. Moisturizes and shields skin from UV damage with strong, PABA-FREE sunscreen. Firming botanicals, Hydrocotyl and Coneflower Extracts, tighten contours, while leaving a soft glow that makes skin look uplifted.



minimal

SPF 10. Hypoallergenic. Semi-sheer liquid. A virtually invisible finish with a natural coverage. Loaded with youth-boosting benefits. Firms, blurs fine lines, and defends against free radical damage. Oil-free formula keeps skin moisturized. All skin



super-activ

Liquid Makeup. Hypoallergenic. Water-based formula leaves a fresh, natural-looking finish and moderate coverage. Vitamins A, D, E. Panthenol and Lecithin nourish skin. Normal to dry skin.



POWDERS



luxury

High-tech, age-minimizing formula. Advanced reflectors diffuse unflattering light away from imperfections. Polymers float over skin instead of settling into lines and creases. Leaves a smooth, youthful finish.



light neutral 01 light yellow 02 medium neutral 03 medium yellow 04 deep neutral 05 deep yellow 06



dual-activ

Wet/dry formula in a compact. Leaves a flawless, matte finish with adjustable coverage. Wear alone in place of foundation, or over foundation for complete coverage.



snow beige 06 sugar beige 15 soft beige 07 cream beige 09 almond beige 12 cameo beige 11

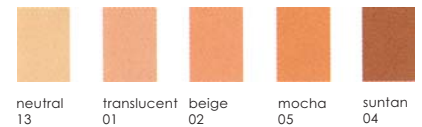


tender beige 10 light beige 01 medium beige 02 sand beige 13 rose beige 03 deep beige 04 fawn beige 14 mocha beige 05



pressed

Triple-milled pigments leave a fresh, natural matte finish. Keeps makeup looking "just applied," without caking or smudging. Great for touch-ups.



neutral 13 translucent 01 beige 02 mocha 05 suntan 04



loose

Our loose translucent formula feels like cashmere. Use to "set" initial makeup application and maintain its perfection.



nude 01 rose 02 cream beige 12 neutral 15 sand 16



medium beige 11 sable 17

POWDERS



mosaic

Hypoallergenic. Five harmonizing hues in one mosaic powder. When blended together, they created a single shade universally wearable on all skin. Available as bronzers, face powders, highlighters, blush.



mosaic glamer 06



mosaic perfecting 04



mosaic bronzing 02



mosaic blushing 03



mosaic sheer satin blush 05



mosaic finishing 01



pro palettes

Professionally developed palettes simplify the art of makeup application. Five versions are available to satisfy different needs.



eye try 10



lip palette 08



luminizer 04



concealer 05



correct/conceal 06

SHIMMER & SHINE



glisten up

Modern gleam creme. Gives the face a luminous, "lit from within" aura. Can be dabbed all over bare skin for instant radiance. Or, apply over foundation to highlight specific areas.



gleam cream



twinkle touch

Holographic gel in a pot for face and body. Flecked with micro-glitter, it creates subtle, shimmering highlights. Quick, dab-on application.



twinkle touch



chunky glitter

Dramatic, dazzling effects. Over-sized glitter particles reflect the light 1,000 times. Brush over cheeks, shoulders, decollete, bare back or midriff, etc.



opalescent 05



silver 02



gold 03



hot pink 01



turquoise 06



purple 04

CORRECTORS & PRIMERS



blemish treatment concealer

Super-opaque creme camouflages and treats blemishes with special healing ingredients.



correct & reflect

Dual-ended eye perfecting pencil. Reflect (applied first) is a light deflector with Vitamin C to brighten and minimize lines. Can be used during the day to smooth dryness lines. Correct is a high-coverage concealer that hides dark circles, wrinkles and other facial flaws.



retexturecreme

Lightweight liqui-creme worn alone or over moisturizer. Retextures and resurfaces so makeup applies easily and evenly. Blended with Aloe Vera & plant extracts that nourish skin.



ultimatte

Instant T-zone mattifier. New-generation gel creates a smooth, matte finish in seconds. Matrix of high-performance mattifiers delivers intense shine-stopping action. Apply to forehead, nose, chin and other areas where shine breaks through. Can be reapplied over makeup, if necessary, throughout the day.



concealer

Designed to alleviate dark under-eye circles. Brightens and hides imperfections. Non-drying formula conditions skin without caking. Available in stick, creme pot, and liquid formulas.



invisible blotting powder

A shine-free, no-color finish. Technologically advanced formula won't cake, dry out skin – or alter the shade of foundation. Available in pressed and loose formula.





sheer satin

sheer matte

pressed powder blush-on

CHEEKS

barely blushing

cremestick blush



Blush



sheer matte

Transparent matte finish. Technologically forward powder formula features micro-crushed pigments designed for easy application and durable wear.



sheer satin

Sheer color, shimmer finish. Smooth, satiny powder with micro-pulverized pigments float over skin. Creates a soft transparency that lasts for hours.



pressed powder blush-on

Luxurious, long-wearing finish. Brushes on easily... blends without streaking. Available in matte and soft-pearl shades.



barely blushing

Modern, oil-free creme/gel leaves a hint of tint. Moisturizes and conditions. Easy, finger-touch application.



cremestick blush

Cream blush in a swivel-up stick. Strokes on subtle, delicate color. Applies easily with fingertips.





mascaras

liners

pencils

primers

EYES

shadows

custom creations

brows

eye care



Eyes



sheer matte

Transparent matte finish. Lucid color lets skin show through. Apply solo, or layer with other shadows.



sheer satin

Sheer-color, shimmer finish. Apply dry, or wet for a richer luster. Wear alone, or over matte shades to add soft lights.



superfrost

Intense, frost finish. Super-rich, water-proof formula. Can be used dry, or wet for a rich luster application.



Eyes



french pearl

Delicately pearled finish. Stronger color impression. Mirrors the light, for a subtly sensuous gleam.



dimensional

Iridescent, three-dimensional finish. Breakthrough technology "layers" matte and pearl pigments to create unique fabric-like texture. Use wet for a creamier and more long wearing effect.



shadow shifter

Transforms ordinary shadow into something special. Split pan with 2-shade versatility.



matte

Rich, high-pigment, matte finish. Smooth, luxurious texture. Non-drying formula conditions during wear.





triple split

One eye shadow "split" into three coordinating shades. Satin-smooth formula blends easily. Wear the medium tone on lid; the dark in crease and along lash line; the lightest as highlighter.



sheer creme

Creamy, natural finish. Like a wash of color. Wear alone, or under powder shadow for more intensity and depth. Easy fingertip application.



dome tint sets

Complete pre-assembled shadow wardrobe in one compact. Each contains four coordinating shades. Foolproof makeovers guaranteed.



shimmer dust

Modern gleam, intense color. High-tech pigment technology. Stroke over eyelids, cheeks, shoulders, etc. May also be applied wet for high-beam color and shine.



colorlift

Sheer liquid color with a built-in lift. Firming botanicals make eyelids look smooth and "uplifted." Sets quickly.



eye gloss

"Wet look" for lids. Glistening high-shine gloss feels light on skin... looks super-trendy. Simple, dab-on application. Wear alone, or with another shadow.





custom creations

Empty compact designed for customization. Holds your choice of dome-shaped shadows. Available in Sheer Satin, Superfrost, French Pearl, Sheer Matte and Matte formulas. Compacts available as shadow duos, trios and quads.



french lily D156 stellar D47 aura D510 linen D223 sun sheer D520 crystal D550 toast D201 bone D542 cream sheer D700 cream glow D101



oatmeal D287 butter sheer D713 blonde sheer D725 gold mist D78 khaki sheer D717 gilded taupe D570 rose jade D565 sheer champagne D558 putty D225 taupe floats D592



tender taupe D298 taupe 2000 D109 french mocha D195 mushroom D508 crystal taupe D151 taupe sheer D704 tornado D238 raisin sheer D719 french twig D159 raisin D531 cedar D215 malt D507 malt sheer D701 ginger sheer D703 tweed D294



true taupe D268 satin gold D562 baroque bronze D02 burnished bronze D136 french bronze D171 coppered bronze D523 dark brown D216 chocolate D270 cocoa sheer D708 satin chocolate D593 bisque D511 satin pillow D590 sunrise D557 peachy keen D146 bare bisque D259



french blush D170 french nude D118 nude D241 cameo D250 milkshake D106 sunspark D567 peach sheer D714 copper kiss D591 tobacco sheer D718 cocoa mousse D172 lingerie D577 celestial pink D537 ballerina D147 french bisque D194 pink bisque D283



pink princess D514 petal sheer D715 girly D522 champagne D534 blush sheer D702 rose quartz D284 wine sheer D707 y2kopper D596 bordeaux D274 satin garnet D553 oyster D59 frosting D524 french sugar D199 pink champagne D24 lilac mist D521



iced rose D594 heather plum D247 plum sheer D706 sheer plum D560 golden smoke D139 plush plum D515 million \$\$ mauve D103 prune D286 prune sheer D723 french burgundy D173 white orchid D578 satin opal D548 shangri lilac D589 lilac sheer D716 shy violet D579



violent vixen D595 lilac luster D164 planet plum D598 eggplant D572 burgundy sheer D726 aged wine D202 indigo sheer D722 freesia freeze D575 myst D110 chrome D538 pearl grey D162 smoke sheer D705 aluminum D571 millenium blue D597 denim sheer D712



cadet sheer D724 cloud D536 blue wave D580 sky high D102 blue isle D114 navy sheer D709 midnight navy D281 sparkling water D60 mermaid D588 khaki smoke D226 french sage D158 french jade D113 sweet pea D112 14K blue D564 mineral sheer D720



back emerald D513 moss sheer D710 moss D205 grey flannel D163 pine sheer D721 french khaki D132 blue heaven D512 french fog D111 dove grey D266 charcoal plum D573 antique pewter D219 phantom grey D108 carbon sheer D711 black D213

Brows



brush on brow

Single shade powders shape and contour brows. Soft, easy-blend formula leaves a natural-looking brow line.



brow shaper kit

The total system for dimensional brows. The tinted wax creates a base. Two soft-fiber shades impart natural-looking texture and dimension. For a sleeker look, the powders can be applied first, then the wax. Double-ended Takelon brush provides precision.



brow tint

Brush-on tinted gel is like "hair color" for brows. True-to-life shades harmonize with natural color of brows for a natural look. Especially good for naturally tinting gray or blonde brows.



brow shader

All-in-one brow pencil. Creates soft, natural-looking color. The cap has a built-in brush for blending and shaping.



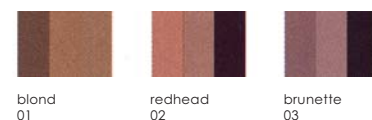
brow set

Clear, brush-on gel "sets" and sculpts brows. Easy, error-free contouring. Flake and feather resistant formula.



tri-brows

One compact with three coordinating shades. Mix shades together and apply. Slant-tip brush deposits color precisely. Bristle brushes provide professional blending.



browblender

Dual-ended pencil imparts the definition of a pencil with a soft-powder finish. The sponge tip blends and shapes.



Mascaras



original

Lengthens, separates and darkens. No clumping. Water-resistant.



sensitive

Gentle, fragrance-free, non-irritating. Suitable for contact lens wearers. Creates natural-looking lashes. Water-soluble formula removes easily.



lush

Lavish lashes. The hollow-fiber brush lifts and separates. Protein-rich formula builds in strength and flexibility. Nine botanicals, plus Vitamins A, E, and C condition and nourish.



waterproof

Won't flake, clump, or smudge. Hard-wearing yet easy on lashes.



supreme

Mascara with a built-in "foundation" for superior wear. Silk proteins strengthen and guard against breakage. Panthenol and Vitamin E keep lashes supple.



lash extender

Like "hair extensions" for lashes! Lash-extending formula contains micro-fibers that give lashes strong dimensionality. Won't flake off. Makes lashes ultra-long.



Liners



cake

For dramatic effects. Cake liner is used wet for intense lining and eye shaping. Rich, long-wearing finish.



liquid

Fine-point brush lines and defines with easy strokes. Smooth and quick drying. Leaves a sophisticated, no-fuss finish.



speedliner

Foolproof results. Liquid liner with felt-tip pen defines eyes with precision. Long-wearing and smudge-proof.



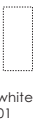
slimline

Sleek, easy-sharpening pencil. Draws a fine, precise line of definition.



eyelight highlighting

Multi-purpose white matte pencil. Use to create wider, brighter eyes. Apply at inner and outer eye corners, along lash line or brow bone.



automatic

Smooth, easy lining. Color-dense liner fortified with Aloe Vera and Chamomile for extra skin soothing. Automatic dispensing pen requires no sharpening.



powderliner

Dual-ended liner for smudgy, smoky looks. The pencil draws a soft, powdery line. The sponge tip blends and diffuses the color.



Primers



lash thickener

Pre-mascara essential. Special strengthening formula creates longer, lusher lashes. Can be used between coats to build-in extra support.



clear



botanical shadow primer

Prerequisite for every shadow. Evens skin tone, camouflages flaws, provides a "canvas" for crease-proof color. Soothing herbal formula.



fair
01



natural
02



shadow magnet

High-tech, pre-shadow cream. Magnetizes color to lids and holds it in place for ultra-long wear. Keeps shadows color-true.



magnet
01

FACE
ARTISTRY





frosted

micro - bubble

classic matte

luxury

LIPS

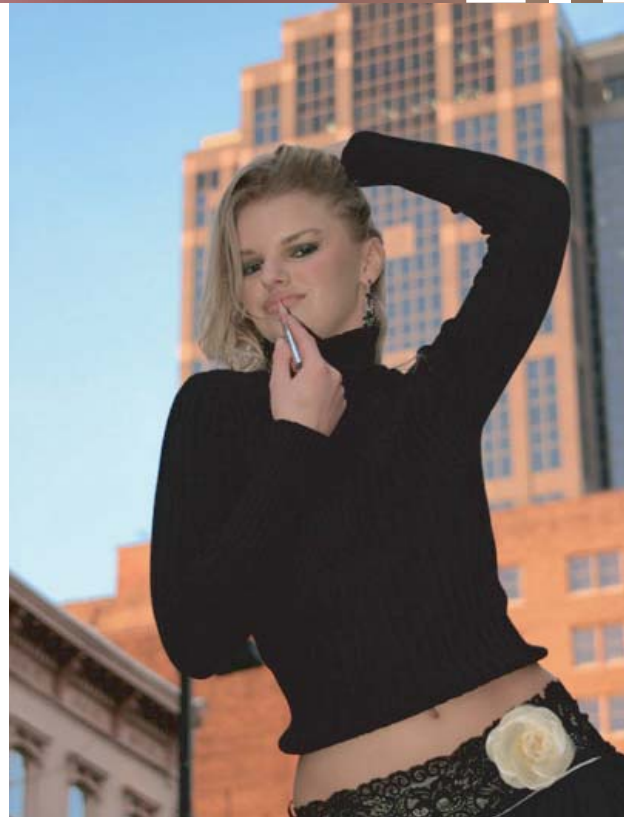
lipshine spf 15

creme

lip gloss/lip shine

pencils

primers, sealers, treatments



Lipstick



frosted

Lustrous, high-frost lipstick. Long-wearing. Contains vitamins and moisture nourishment to keep lips conditioned.



micro - bubble

Creamy, long-lasting, feather resistant. High pigment level. Micro-bubble spheres continually release special conditioners that keep color looking "just applied" for hours longer.



classic matte

Maximum matte finish. Long-lasting, won't feather or fade. Non-drying formula.

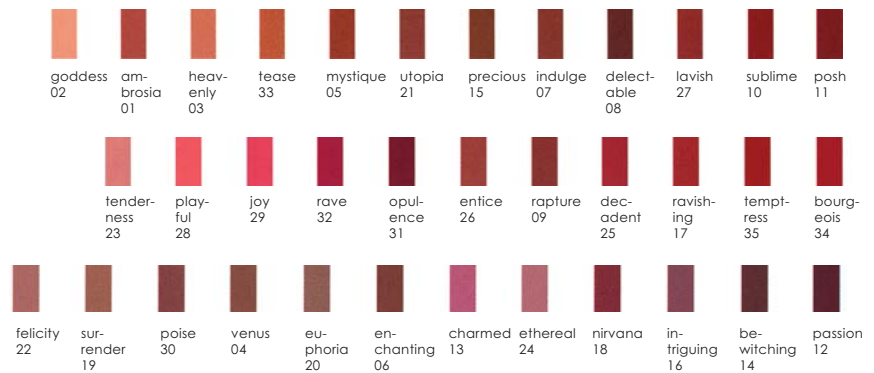


Lipstick



luxury

Lip plumping formula. Contains treatment spheres filled with lip-plumping folic acid and ultra-moisturizing hyaluronic acid. Rich pigment levels, color that lasts. Lush, creamy finish minimizes fine lines.



lipshine spf 15

Soft-tint gloss in a stick. Leaves a barely-there, natural finish. Infused with protective, lip-pampering vitamins and optimum sunscreen.



smooth matte

Weightless color with a soft matte finish. Smooths and shapes lip contours. Unique gel-structure technology hugs color to lips for an easy, weight-free feeling. No heaviness or dryness.



creme

Lusciously creamy, long-lasting lipstick. Rich in moisturizers and Vitamin E for healthier-looking lips.



Lip Gloss



pot

Super-shiny look. classic formula conditions lips with Sesame Oil and Vitamin E. Leaves a non-tacky finish. Easy application...dabs on with fingertips.



wand

Glistening, high gleam in a tube. Conditioning formula protects and smoothes lips. Sponge-tip applicator slicks on easily.



Lip Shine



lip lacquer

A dazzling, pure-patent finish. Lacquered lips mirror the light creating the "wet mouth." Wear on bare lips, or over lipstick as a transformer. Available in clear, tinted, and glitter shades.



liquid color

Super shine + strong color. Leaves lips dripping with an intense sheen of vivid color. Long-wearing, lustrous finish. Sponge-tip applicator delivers precise color placement.



Primers, Sealers & Treatments



lip exfoliating treatment

Smoothing treatment for soft, lush lips. Fine-grained creme sloughs away dulling, dry skin with a Mixed Fruit Acid Complex. Refines and resurfaces, so lip color won't feather or crack.



vita-plus lip treatment

Ultra-conditioning formula rich in Avocado, Chamomile, Jojoba, and Sweet Almond Oils. Multi-vitamins A, E, and C protect lips from damage.



#89 beige lipbase

Pre-lipstick foundation. Creates a smooth neutral canvas over lips, so lipstick stays color-true.



lip lock

Heavy-duty lipstick enforcer. Clear fluid brushes on a smear-proof, waterproof topcoat that protects lip color from anything. Feels comfortable on.



vibran-c lip treatment spf15

Antioxidant-rich treatment in a portable balm stick. Rich in antioxidants, the formula features Vitamin C wrapped around a core of Vitamin E. Smoothes, soothes, helps prevent chapping and peeling.



vitamin e stick

Super-healing treatment in a portable stick. Helps repair dry chapped lips with nourishing Vitamin E. Diminishes creases and fine lines.



smoothing lip primer

Under-lipstick essential. Prepares the mouth, so lip color performs better and lasts longer. Flesh tone neutralizes lips for a color-true lipstick application. Smoothes creases and fine lines for younger-looking lips.



light/
medium
02



medium/
deep
01

Primers, Sealers & Treatments



lip exfoliating treatment

Smoothing treatment for soft, lush lips. Fine-grained creme sloughs away dulling, dry skin with a Mixed Fruit Acid Complex. Refines and resurfaces, so lip color won't feather or crack.



vita-plus lip treatment

Ultra-conditioning formula rich in Avocado, Chamomile, Jojoba, and Sweet Almond Oils. Multi-vitamins A, E, and C protect lips from damage.



#89 beige lipbase

Pre-lipstick foundation. Creates a smooth neutral canvas over lips, so lipstick stays color-true.



lip lock

Heavy-duty lipstick enforcer. Clear fluid brushes on a smear-proof, waterproof topcoat that protects lip color from anything. Feels comfortable on.



vibran-c lip treatment spf15

Antioxidant-rich treatment in a portable balm stick. Rich in antioxidants, the formula features Vitamin C wrapped around a core of Vitamin E. Smoothes, soothes, helps prevent chapping and peeling.



vitamin e stick

Super-healing treatment in a portable stick. Helps repair dry chapped lips with nourishing Vitamin E. Diminishes creases and fine lines.



smoothing lip primer

Under-lipstick essential. Prepares the mouth, so lip color performs better and lasts longer. Flesh tone neutralizes lips for a color-true lipstick application. Smoothes creases and fine lines for younger-looking lips.



light/
medium
02



medium/
deep
01



eye care

spa

sun solutions

SKINCARE

specialty skincare

esthetic research group

holistic



Eye Care

*Innovative formulations to make the eye area look smoother, brighter, more rested.
Utilizing problem-specific botanicals, they diminish puffiness.*

eye makeup remover

with soothing aloe

Clear liquid gently removes every trace of makeup, while pampering eyelids. Available in professional size.

dual action makeup remover

Oil-and-water phase formula especially effective on stubborn mascara and long-lasting lipsticks. Available in sample size.

RetexturEYES®

Water-based, Aloe-infused gel with a spiral matrix of anti-aging vitamins and firming Fibronectin. Intensive, multi-tasking treatment that smoothes, firms, nourishes and conditions.

RetexturEYES® 2

with undereye lighteners

The original RetexturEYES formula, fortified with botanical lighteners.

chinese tea eye gel

with calming botanicals

Deflates puffiness and relieves tired-looking eyes. Chamomile calms irritations and redness. So light, it can be worn under eye makeup. Available in professional size.

cooling eye balm

with puff deflating botanicals

Create a soothing eye compress with this liquid balm, infused with Chinese Tea and Chamomile. In 10 minutes, diminishes puffiness around eyes. Cools and comforts. Available in professional size.

nourishing eye & throat cream

with replenishing natural emollients

High-emolliency formula targets areas most vulnerable to aging. Rich in Avocado, Sunflower and Jojoba Oils – natural lubricating agents. Especially good for mature skin.

eye renewal creme

with alpha hydroxy acids

Mixed Fruit and Glycolic Acid formula. Light and quick-penetrating. Rehydrates and smoothes fine lines.

vital eye creme

with antioxidant vitamins

Super-intensive creme with Vitamins E and C for free radical repair. Protective vitamins A and B bind moisture to skin. Shea Butter, Squalane and Avocado Oil soften.



These superior body treatments duplicate the experience of a professional spa therapy. Incorporating natural elements such as Marine Minerals, Papaya Enzymes and Sea Salt into spa-strength formulations, they effectively target trouble zones. Buffing rough areas, firming loose contours, re-energizing tired feet, moisture-nourishing head to toe... and lifting the spirits with the newest aromatherapeutic scents. Skin emerges smooth, sleek, toned and taut.

salt scrub

Super-sloughing body. Protects against dehydrating forces with Sunflower, Macadamia and Sweet Almond Oils. Available in four mood-altering scents. Refreshing with zesty notes of Lemongrass. Tranquil with soothing lavender. Romantic with lavish Jasmine and Energizing with a charge of Peppermint.

body contour gel with thermal action

Lightweight, tingling gel firms, tightens and tones. Botanically balanced microspheres suspended in the formula reinforce the superb contouring and moisturizing action. Available in professional and sample size.

firming body lotion

with marine minerals
Natural sea minerals and intensive firming botanicals (Hydrocotyl and Coneflower) in an innovative formula. Brings new sleekness, new suppleness -- especially to problem areas (thighs, buttocks, arms). Available in sample size.

sea salt and papaya body buff

Exfoliating natural sea salt and deep-cleansing Papaya transform dull, dry, flaky skin. Gently buffs to reveal a new smoothness. Available in professional and sample size.

hydratfirm®

Throat & Bust Formula

Intensive two-phase formula tightens loose contours with nine botanical extracts, while milk protein beads hydrate and soften skin. Throat and bust area appears firmer and smoother.

moisture mitts hand therapy

Forms an invisible, water-resistant "glove" of protection against age-accelerating forces (i.e. sun, wind, cold.) Unique moisture binders and botanicals relieve dryness, chapping and brittle nails with a surge of intensive therapy. Available in professional and sample size.

peppermint foot therapy

A highly therapeutic creme fortified with refreshing Peppermint, antiseptic Eucalyptus and Papain, a natural exfoliator. Helps heal dryness, cracked heels, and irritations. Available in professional and sample size.



Spa - Aromatheraphy

An exclusive collection of four pre-blended, 100% natural Essential Oil Elixirs. Each has a different base oil and targets a specific skin action: Oxygenating, Restoring, Soothing, or Purifying. All Elixirs are free of alcohol, preservatives, dyes, artificial fragrances and mineral oil. Also includes Squalane (an olive derivative) in its purest form, which can be mixed with all Elixirs for extra-emollient treatments and massages. Available in professional size.

oxygenating elixir

A minty, aromatic blend of stimulating and hydrating fruits, woods, herbs and florals. Replenishes, hydrates and tones dry, devitalized skin.

Essential Oils: Rice Bran (base oil), Peppermint, Clove, Geranium, Rosemary, Cypress, Thyme, Cinnamon and Anise.

restoring elixir

Earthy, aromatic, richly fortified with spices, woods and florals. Rejuvenates mature or sun-damaged skin with nourishing lubrication.

Essential Oils: Apricot Kernel, Macadamia Nut (base oils), Lavender, Geranium, Patchouli, Pine, Clove, Jasmine, Juniper, Sandalwood, and Bay.

soothing elixir

A therapeutic herbal and floral mixture that brings calm, comforting relief to sensitive, irritated skin.

Essential Oils: Apricot Kernel and Squalane (base oils), Rosewood, Lavender, Sweet Marjoram, Basil, Chamomile, Coriander, Orange Flower, and Clary.

purifying elixir

A refreshing blend of medicinal citrus, herbs and floral oils. Decongests and detoxifies oily, combination skin.

Essential Oils: Apricot Kernel (base oil), Lemon, Lavender, Bergamot, Pine, Basil, Chamomile, Rose, Fennel, and Ylang Ylang.



Sun Solutions

It is well-recognized that one of the most effective anti-aging treatments is the daily use of sunscreen. The popularity of Retinol and AHA treatments, plus dermatological procedures like glycolic peels and laser surgery, has created a population that is becoming much more sun-sensitive. Sun Solutions offers diverse levels of protection. All are formulated with the most advanced sunscreens recommended by the American Dermatological Association. In addition, they emphasize soothing botanicals and reparative vitamins that help revitalize dehydrated, over-exposed skin. Essential Ingredients: PABA-FREE UVA/UVB Sunscreens, Aloe, Vitamins E, A, and C.

moisture plus lotion spf 15

with vitamins and soothing botanicals

A feather-light moisturizer with the protective plus of four PABA-free sunscreens. Moisturizing aloe, and vitamins E, A, and C – provide extra environmental defense.

maximum protection creme spf 25

with enviro-protective vitamins and aloe

For highly photosensitive, dehydration-prone skin that needs maximum outdoor protection.

sun shield stick spf12

Specially formulated for the delicate lip and eye areas.

waterproof creme spf 30

The total block, fortified with potent PABA-free sunscreens and super-nourishing humectants.

self - tan

Water-based creme smooths on a rich, natural-looking "tan," head to toe. Available in Medium and Dark.



Specialty Skincare

Clinical System

Utilizing the best of modern technology, this extensive collection focuses on complete systems targeted to special concerns. Formulations are state-of-the-art. Ingredients are proven effective. Constantly evolving to keep pace with science and industry trends. Specialty Skincare fulfills its promise of ensuring healthy, youthful skin vitality.

anti - aging

High-tech cosmeceuticals that forge new frontiers in the anti-aging category. Bridging the gap between cosmetic skincare and pharmaceuticals. Utilizing the latest anti-aging ingredients, dermatological formulas and delivery systems. These treatments have been medically documented to alleviate the signs of aging.

active-A retinol treatment

Age-minimizing creme with .15 % Retinol (Vitamin A) in a non-irritating, gradual-release Microsponge® system. Advanced antioxidant Vitamins C and E shield against environmental damage.

gentle resurfacing lotion spf 15

with polyhydroxy acids

Accelerated cell renewal in a high-tech, gentle polyhydroxy acid system. Microsponges® gradually release 6% PHA (a mild acid derived from milk sugar) for dramatic retexturizing benefits. Fortified with reparative antioxidants Green Tea Extract, plus Vitamins E, C, and A. An excellent choice for early signs of aging for sensitive, delicate skin unable to use Alpha Hydroxy Acids.

reparative moisture creme

with vitamins and soothing botanicals

Anti-aging creme that repairs and replenishes even the most damaged mature skin. Ultrasones help repair DNA damage and improve cell turnover. Oxygenators and a Botanical Firming Complex help to tighten and tone skin. Nourishing Sunflower, Jojoba and Hazelnut Oils provide rich lubrication.

advanced lightening creme

High-tech formula gently diminishes hyperpigmentation, sun and age spots. Contains 2% Hydroquinone plus botanical lighteners Saxifraga Sarmentosa, Licorice, and Mulberry Root.



Specialty Skincare

Techno-Natural System

Nature reengineered with technology. Harnessing the finest resources and raw ingredients from nature. Each Techno-Natural System features a "star" ingredient known for its skin-beneficial properties.

enzymes

The beauty of enzymes in modern skin resurfacing is their ability to boost exfoliation without irritation. We use one of the most effective – Papaya (Papain) – in our enzyme products. This protein dissolver digests dead skin cells, and with continued use, can make the complexion more smooth, translucent and radiant.

papaya enzyme cleanser

"Flash foam" cleanser removes debris and smoothes surface skin. Cucumber and Kiwi Extracts improve circulation.

papaya enzyme toner

Alcohol-free formula with stimulating extracts – Cucumber, Geranium and Sage – to refresh skin.

exfoliating enzyme scrub

Two-in-one action features cell-loosening enzymes plus skin-sweeping micro-beads for maximum skin revitalization. Available in sample size.

enzymatic resurfacing masque

Gel/creme with double-dose enzymatic action for optimal results. Gentle, neutral pH formula with 100% natural Papaya and Pumpkin Puree enzymes exfoliates flaky, dead surface cells. Five anti-inflammatory botanicals, including Cucumber, Chamomile and Calendula, calm and soothe the complexion. Available in sample size.

vitamin c

Cosmetic scientists utilize Vitamin C because it is proven to fight the aging damage of free radicals. This natural antioxidant also boosts collagen production, firming and transforming skin with new resiliency. Vitamin C is highly touted as a skin brightener that helps prevent hyperpigmentation and even out skin tone.

vibran-c creme

with ceramides

High-tech formula with a therapeutic 10% level of stabilized L-Ascorbic Vitamin C. Fortified with an advanced ceramide moisture retention system to create an invisible barrier against dehydration and dullness.

vibran-c firming eye gelee

Vitamin C is linked to protein for maximum absorption with no irritation. Formulated with Licorice Extract to lighten dark circles and multiple firmers for a smoother, more "lifted" look.

vibran-c lip treatment spf 15

Intensive-healing antioxidant balm helps repair dry, chapped, aging lips. Vitamin C retexturizes and smoothes fine lines, while a core Vitamin E brings extra nourishment.



Specialty Skincare

Oxygenating System

dull, dry skin

Naturally invigorating ingredients stimulate sluggish skin, improving cellular function, creating a young radiant glow. Provides the optimal moisturization that dull, dry skin needs.

Essential Ingredients: Hemolymph Extract, Oxygenating Essential Oils including: Peppermint, Geranium, Rosemary, Cypress, Thyme, Anise and Cinnamon.

oxygenating cleanser

Ultra-light, water-soluble foam. Delicately washes away impurities and invigorates with stimulating botanicals.

oxygenating toner

Refreshes sluggish skin as it helps stimulate circulation. Available in sample size.

oxygenating creme

Highly nurturing, this rich creme encourages the turnover of dry, dull cells. Uncovers a newfound radiance. Available in sample size.

Vitamin System

all skin

Vitamin-rich formulas protect skin from the environmental damage that triggers premature aging. Skin appears smooth, fresh, and healthy-looking.

Essential Ingredients: Antioxidant Vitamins E and C, skin-smoothing Vitamins A and B, Jojoba and Avocado Oils, Sodium Hyaluronate.

vital gel/creme cleanser

Botanical-rich, two-phase formula cleanses skin as it conditions and refreshes.

vital toner

with alpha hydroxy acids

Low-level mixed fruit and glycolic acids work their exfoliating action. Intensive natural extracts refine and refresh skin.

vital moisture spf 15

The everyday essential... invigorating moisture + optimal sun protection for healthy skin. Available in sample size.

vital nourishing creme

with anti-oxidants

Rich in Vitamins E and C to deflect free radicals. High-tech humectants to soften the signs of premature aging. Available in sample size.

vital eye creme

with anti-oxidants

Nature's best antioxidants join forces to help diminish crow's feet and wrinkles.



Specialty Skincare

Oil Defense System

Combination/Oily Skin

Anti-bacterial formulas help prevent blemishes and keep skin free of pore-clogging oil. Clarifies and refines texture for a healthier appearance.

Essential Ingredients: Oil-Blotting Extracts, Camphor, Eucalyptus Oil, Witch Hazel.

oil defense cleanser

Crystal clear cleansing gel with soothing Aloe and Oil-Blotting Extracts. Available in sample size.

pore refining toner

Anti-bacterial action removes flakes. Declogs pores. Clarifies and refines. Available in sample size.

oil control mattifying gel

Moisturizer for oily skin. Blots away "shine"... hydrates only where needed. Brings oily skin into perfect equilibrium. Available in sample size.

ultimatte

instant t-zone mattifier

Targeted gel with a unique matrix system of high performance "shine stoppers."

Alpha Hydroxy System

All Skin

Skin-refining AHAs resurface and clarify skin. Products contain a special blend of Mixed Fruit Acid Complex and Glycolic Acid. Gentle, yet effective treatment suitable for all skin types and ages.

Essential Ingredients: Glycolic Acid, Fruit Acid Complex (includes Sugar Cane, Citrus, Apple and Green Tea Extracts), Lactic Acid.

skin renewal cleanser

Milky cleanser + revitalizer in one. Gentle acids of mixed fruit and glycolic slough off dead cells, while thoroughly dissolving impurities. Available in sample size.

vital toner

with alpha hydroxy acids

Toner and treatment in one. Clarifies, refines pores, stimulates tired skin.

skin renewal complex

Gentle, low-AHA treatment to stimulate the exfoliation process and uncover a new radiance.

maximum renewal gel

A higher dosage of acids (9%) for highly effective skin transformation.

skin renewal creme spf 4

Active AHA benefits, in a luxurious, sunscreen-infused creme for drier skins. Also in sample size.

body renewal lotion

Intensive action for flaky, rough skin. Enriched with Vitamins A and C plus aloe. Smooths and silken head-to-toe. Available in sample size.

eye renewal creme

with alpha hydroxy acids

Mixed Fruit and Glycolic Acid formula. Light and quick penetrating. Rehydrates and smooths fine lines.



Specialty Skincare

Hydrating System

All Skin

Key minerals help stimulate cell metabolism to optimize skin function. Botanical oils, plant extracts and humectants keep the complexion hydrated and balanced.

Essential Ingredients: Mineral Complex (Silicon, Magnesium, Copper, Iron, Zinc), Firming Botanical Complex (Hydrocotyl and Coneflower Extracts), Natural Oils (Jojoba, Avocado, Sesame, Hazelnut, Sunflower).

skin vitality cleanser

"Weight-free" cleanser releases a refreshing foam of micro-bubbles to lift off impurities, make-up and pollutants. Moisture boosters rehydrate and revitalize circulation.

skin vitality mineral mist

Non-alcohol toner and daytime refresher. Sprays on vital nutrients every skin needs. Helps boost skin circulation for a more energized look. Available in sample size.

skin vitality moisture fluid

Daytime moisture essential. Helps diminish fine lines and wrinkles. Smooths uneven texture. Available in sample size.

vita - firm serum

Face-lift in a bottle. Intensive daily treatment that not only builds healthy skin, but actually firms with a unique Firming Botanical Complex. Vital minerals help improve epidermal function and superb moisturizers hydrate "thirsty" cells. Worn beneath day moisturizer and night treatment.

hydrating creme concentrate

Rich, whipped formula. A unique skin-softening complex attracts water to cells and "locks" it in for optimal hydration. Macadamia Nut and Olive Oils create a soft suppleness. Available in sample size.

hydrating creme extreme

Intensive care treatment, designed for severely dry skin. Four humectants pull water deep into skin to nourish emerging cells. Five natural oils (Jojoba, Avocado, Sesame, Hazelnut and Sunflower) seal in the softness. Special antioxidant Vitamins C and E repair damage on the surface. Available in sample size.

hydratfirm®

Throat & Bust Formula

Intensive two-phase formula tightens loose contours with nine botanical extracts, while milk protein beads hydrate and soften skin. Throat and bust area appears firmer and smoother.



Esthetic Research Group

The Esthetic Research Group® (ERG) is an advanced botanical treatment collection. The products are designed to treat both skin types and specific skin conditions, (i.e. devitalized, sensitive, blemish-prone, delicate). ERG products are available in professional and retail sizes.

rejuvenating system

dry, mature skin

Developed for skin that is experiencing aging, such as lines, wrinkles, uneven texture. Formulated with a blend of natural oils and lubricating extracts that help rebuild skin's underlying support system. These protein-rich formulas help prevent cellular breakdown and replenish moisture-starved skin with nature's best anti-aging warriors.

Essential Extracts: Royal Jelly, Macadamia Nut Oil, Lavender Oil, and Dark Clover Honey.

the rejuvenating system

- Rejuvenating Cleansing Creme with Moisturizing Macadamia Nut Oil
- Rejuvenating Toner with Lavender and Macadamia Nut Oils
- Rejuvenating Hazelnut Moisture Creme with Moisture-Binding Botanicals
- Rejuvenating Night Treatment with Restorative Squalane
- Rejuvenating Royal Gelee Masque with Intensive Cellular Revitalizers
- Rejuvenating Double Serum with Re-Energizing Extracts

calming system

normal and sensitive skin

Developed for sensitive skin that is easily irritated, prone to redness and blotchiness. Natural extracts help calm surface texture and fight the source of inflammations deep down. These extra-nourishing formulas, perfectly suited for normal skin as well, provide soothing, cooling relief and a healthier condition. Essential Extracts: Chinese Tea, Chamomile.

the calming system

- Calming Chamomile Cleanser with Natural Chinese Tea Extract
- Chinese Tea Facial Rinse with Natural Calming Extracts
- Calming Chamomile Day Lotion with Comforting Chamomile
- Chinese Tea Night Creme with Calming Replenishers
- Calming Gel Masque with Skin-Tranquility Complex
- Calming Serum with Soothing Chinese Tea Extract



Esthetic Research Group

equalizing system *oily/combination skin*

These oil-free, water-based products bring oily combination skin into perfect equilibrium. Deep cleansing and refining pores. Absorbing excess oil and providing just the right amount of hydration. Leaves skin feeling refreshed, completely clean.

Essential Extracts: Chamomile, Rosemary, Yarrow, Hops, Fennel, and Aloe Vera.

the equalizing system

- Foaming Facial Wash with Skin-Balancing Botanicals
- Equalizing Herbal Cleanser with Purifying Rosemary Extract
- Equalizing Herbal Freshener with Rosemary & Rosewater
- Balancing Day Lotion with Natural Fennel Extract
- Equalizing Herbal Masque with Oil-Blotting Oat Flour

control system

oily/blemish prone skin

Science and nature combine to banish blemishes, control oily secretions and ward off future breakouts. These alcohol-free, antiseptic formulations contain the right blend of Resorcinol, a proven blemish-fighter, and Salicylic Acid, a gentle exfoliator to rid skin of impurities. Key botanicals, specially selected for their cooling properties, tone down redness and inflammation. Special hydrators leave a fresh, matte finish without drying.

Essential Extracts: Camphor, Eucalyptus, Peppermint, and Rosemary.

the control system

- Blemish Control Cleanser with Anti-Bacterial Botanicals
- Control Toner with Oil-Blotting Complex
- Daily Control Lotion with Concentrated Camphor & Eucalyptus
- Blemish Control Gel with Antiseptic Action
- Control Plus Masque with Blemish-Banishing Extracts
- Control Serum with Anti-Bacterial Complex



Holistic Skin Care's "feel good" formulas are perfect for those who prefer a pared-down, no-nonsense regimen. Bursting with nature's best fruits, vegetable and botanical extracts... deliciously scented and wonderfully pampering... these products nourish skin as they re-energize the senses. The apothecary-style packaging captures the feeling of beauty potions passed down through generations.

tangerine face cleanser
with honey & oatmeal

Tangerine, rich in Vitamin C, combines with the exfoliating action of Oatmeal and Sweet Almond flakes. Also contains ultra-conditioning Honey.

skin mist

with essence of orange & jasmine
Non-alcohol, pH-balanced. Soothing spray and refining toner in one. With Jasmine Bitter Orange,

hydrating milk

with Soothing Chamomile
Lightweight hydrator infused with the calming botanicals Chamomile and Gotu Kola.

moisturizer

with tomato extract & orange oil
Tomato Extract, Orange Oil and Vitamin E provide ideal nourishment for every complexion.

avocado ginger moisture creme

Blended with Vitamin E and super-emollient Avocado and Sesame oils. Excellent for drier skin types.

oolong tea & carrot oil eye creme

Oolong Tea is known to help deflate puffiness and calm irritation. Vitamin-rich Carrot, plus Avocado and Sweet Almond, smooth fine lines.

gentle eye makeup remover

with cucumber & green tea
Ultra-gentle, creamy lotion infused with refreshing Cucumber and soothing Green Tea pampers fragile lids and lashes.

lip balm

with fruit extracts
Tinted balm scented with Apple, Cranberry, Raspberry and Blueberry. Gently softens, smoothes and prevents chapping.

clear lip balm

with vanilla extract
Peak-conditioning formula features Aloe and Allantoin, blended with Vitamins A, C and E.

pumpkin face scrub

with apricot & walnut
Natural Pumpkin dissolves flaky, dead cells. Exfoliating Apricot and Walnut granules whisk them away.

peel - off masque

with lavender & fruit extracts
With spirit-lifting Lavender, plus skin-sloughing fruit extracts (Sugarcane, Lemon, Orange, Apple). Contains soothing St. John's Wort and Chamomile.



Many Thanks to

My beautiful models...

Jo, Amanda, Ashley, Gabrielle & Cat

Also to my talented photographers...

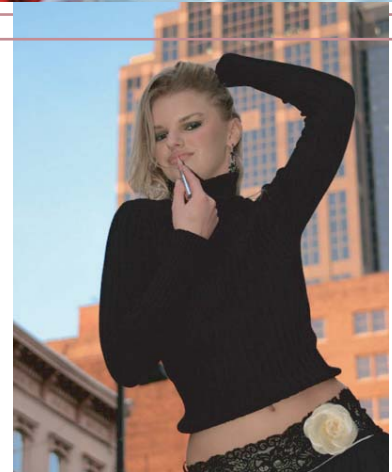
Emanuel V & Neal Banerjee

And, of course...

Alex, Lexi, Chaz, & Me!

Designed by

Christina Petch, Vigor Creative
<http://www.vigorcreative.com>



Thank You!

Face Artistry Price List

Foundations

Custom Blend - 25.00
Perfect Protection – 15.00
Lift And Tint – 12.00
Minimal – 15.00
Super Active – 15.00
Matte Oil Free – 15.00
Light Diffusing – 15.00
Stick Foundation – 10.00
Maximum – 15.00
Pro Palettes – 15.00

Powder

Custom Blend Loose – 25.00
Luxury – 15.00
Dual Active – 15.00
Pressed – 15.00
Loose – 15.00
Oil-Control – 15.00
Pressed Bronzers – 14.00
Sheer Shimmer – 15.00
Loose Shimmer – 15.00

Correctors And Primers

Blemish Treatment/concealer – 9.00
Correct And Reflect – 12.00
Retexture Crème – 17.00
Ultmatte – 12.00
All Concealers – 9.00
Invisible Blotting Powder (Pressed or Loose) – 14.00

Shimmer & Shine

Glisten Up – 9.00
Twinkle Touch – 10.00
Chunky Glitter – 9.00

Eyes

Sheer Matte – 7.00
Sheer Satin – 7.00
French Pearl – 7.00
Superfrost – 7.00
Dimensional – 7.00
Shadow Sifter – 8.00
Matte – 7.00
Triple Split – 10.00
Sheer Crème – 9.00
Custom Creations
Compact w/2 – 15.00
Compact w/3 – 22.00
Compact w/4 – 28.00
Dome Tint Sets – 16.00
Shimmer Dust – 9.00
Colorlift – 10.00
Eye Gloss – 10.00

Brows

Brush On Brow – 8.00
Brow Shaper Kit – 17.00
Brow Tint – 8.00
Brow Shader – 10.00
Brow Set – 8.00
Tri-brows – 14.00
Browblender – 10.00

Mascaras

Original – 10.00
Sensitive – 9.00
Lush – 9.00
Waterproof – 9.00
Supreme – 10.00
Lash Extender – 10.00

Liners

Cake Liner – 9.00
Slimline – 9.00
Eyelight Highlighting – 9.00
Liquid – 9.00
Speedliner – 10.00
Automatic – 10.00
Powderliner – 10.00

Primers

Lash Thickener – 9.00
Botanical Shadow Primer – 9.00
Shadow Magnet – 9.00

Blush

Sheer Matte – 10.00
Sheer Satin – 10.00
Pressed Powder Blush-on – 10.00
Barely Blushing – 10.00
Cremestick Blush – 12.00

Lips

Lipshine – 9.00
Smooth Mat – 10.00
Crème – 9.00
Frosted – 9.00
Micro-Bubble – 9.00
Classic Matte – 9.00
Luxury – 10.00

Lipgloss

Pot – 9.00
Wand – 9.00
Lip Lacquer – 9.00
Liquicolor – 9.00

Face Artistry Price List

Lip Pencils

Quick Draw – 9.00
Automatic – 9.00
Smooth – 9.00
Slimline – 8.00
Longlasting – 9.00

Primers, Sealers, Treatments

Lip Exfoliating Treatment – 10.00
Vita-plus Lip Treatment – 9.00
#89 Beige Lipbase – 9.00
Lip Lock – 8.00
Vibran-C Lip – 10.00
Vitamin E Stick – 9.00
Smoothing Lip Primer – 9.00

Eyecare

Eye make-up Remover w/Soothing Aloe – 12.00
Dual Action Eye-makeup Remover – 14.00
Retextureyes – 20.00
Retextureyes w/ Undereye Lightners – 22.00
Chinese Tea Eye Gel – 15.00
Cooling Eye Balm – 15.00
Nourishing Eye And Throat Crème – 18.00
Eye Renewal Crème – 18.00
Vital Eye Crème – 18.00

Skincare

Spa

Sal Scrub Each – 32.00
Body Contour Gel – 18.00
Firming Body Lotion – 20.00
Sea Salt And Papaya Body Buff – 20.00
Hydrafirm (Throat And Bust) – 25.00
Moisture Mitts And Therapy – 15.00
Peppermint Foot Therapy – 15.00
Spa-Aromatherapy
Oxygenating Elixir – 20.00
Restoring Elixir – 20.00
Soothing Elixir – 20.00
Purifying Elixir – 20.00

Sun Solutions

Moisture Plus Lotion – 15.00
Maximum Protection Crème – 15.00
Sun Shield Stick – 9.00
Waterproof Crème – 15.00
Self-Tan – 15.00

Specialty Skincare

Clinical System

Active-A Retinol Treatment – 30.00
Gentle Resurfacing Lotion – 23.00
Reparative Moisture Crème – 25.00
Advanced Lightening Crème – 18.00

Techno-natural System

Papaya Enzyme Cleanser – 15.00
Papaya Enzyme Toner – 15.00
Exfoliating Enzyme Scrub – 18.00
Enzymatic Resurfacing Masque – 18.00
Vibran-C Crème w/ Ceramides – 25.00
Vibran-C Firming Eye Gelee – 15.00
Vibran-C Lip Treatment – 9.00

Oxygenating System

Oxygenating Cleanser – 15.00
Oxygenating Toner – 15.00
Oxygenating Crème – 18.00

Vitamin System

Vital/gel Crème Cleanser – 15.00
Vital Toner – 15.00
Vital Moisture Spf 15 – 15.00
Vital Nurifying Crème – 16.00
Vital Eye Crème – 15.00
Oil Defense System
Oil Defense Cleanser – 15.00
Pore Refining Toner – 15.00
Oil Control Mattifying Gel – 15.00
Ultimatte – 12.00

Alpha Hydroxy System

Skin Renewal Cleanser – 15.00
Vital Toner – 15.00
Skin Renewal Complex – 15.00
Maximum Renewal Gel – 15.00
Skin Renewal Crème SPF4 – 15.00
Body Renewal Lotion – 15.00
Eye Renewal Crème – 15.00

Hydrating System

Skin Vitality Cleanser – 15.00
Skin Vitality Mineral Mist – 15.00
Skin Vitality Moisture Fluid – 15.00
Vita-Firm Serum – 21.00
Hydrating Crème Concentrate – 25.00
Hydrating Crème Extreme – 28.00
Hydrafirm (Throat And Bust) – 25.00

Face Artistry Price List

Esthetic Research Group

Rejuvenating System

- Rejuvenating Cleansing Crème – 15.00
- Rejuvenating Toner – 15.00
- Rejuvenating Hazelnut Moisture Crème – 18.00
- Rejuvenating Night Treatment – 18.00
- Rejuvenating Royal Gelee Masque – 18.00
- Rejuvenating Double Serum – 18.00

Calming System

- Calming Chamomile Cleanser – 15.00
- Chinese Tea Facial Rinse – 15.00
- Calming Chamomile Day Lotion – 15.00
- Chinese Tea Night Crème – 18.00
- Calming Gel Masque – 15.00
- Calming Serum – 18.00

Equalizing System

- Foaming Facial Wash – 15.00
- Equalizing Herbal Cleanser – 15.00
- Equalizing Herbal Freshener – 15.00
- Balancing Day Lotion – 15.00
- Equalizing Herbal Masque – 15.00

Control System

- Blemish Control Cleanser – 15.00
- Control Toner – 15.00
- Daily Control Lotion – 15.00
- Blemish Control Gel – 10.00
- Control Plus Masque – 15.00
- Control Serum – 18.00

Holistic

- Tangerine Face Cleanser – 15.00
- Skin Mist – 15.00
- Hydrating Milk – 15.00
- Moisturizer (Tomato Extract & Orange) – 15.00
- Avacado Ginger Moisture Crème – 15.00
- Oolong Tea & Carrot Oil Eye Crème – 15.00
- Gentle Eyemake-up Remover w/ Green Tea – 15.00
- Lip Balm w/ Vanilla Extract – 10.00
- Clear Lip Balm w/ Vanilla Extract – 10.00
- Pumpkin Face Scrub – 18.00
- Peel-off Masque w/ Lavender – 18.00

Face Artistry's Return Policy

Returns

Returns are only accepted if the product is damaged or if the wrong items were shipped.

Return authorizations are required and must be approved, and shall be called in within 3 days of delivery. 1-919-623-4433

All returns are shipped back at the customer's expense.

If you are interested in booking for makeup artistry, please contact anjanette:

Face Artistry
P.O. Box 61374
Raleigh, NC 27661
919.623.4433

www.faceartistrycosmetics.com
www.faceartistry.net
Email: anjanette@faceartistrycosmetics.com

Commercial
Print
Video
Wedding
Runway
Special Occasions

* call for pricing on professional sizes and quantities.



Mail order to:

Face Artistry By Anjanette P.O. Box 61374 Raleigh, NC 27661
919.623.4433
www.faceartistrycosmetics.com

NAME _____

ADDRESS _____ APT# _____

CITY _____ STATE _____ ZIP _____

PHONE _____ E-MAIL _____

ITEM (number + description)	QTY	PRICE
MINIMUM ORDER \$25.00 \$ 25.00 - \$100.00..... \$ 8.95 S&H \$101.00 - \$150.00..... \$10.95 S&H \$151.00 - \$200.00..... \$12.95 S&H \$201.00 or more..... \$14.95 S&H	SUB TOTAL	
	+ STATE TAX	
	+ S & H	
	GRAND TOTAL	

We accept check or money order payments by mail.
 We also accept PayPal payments through our web site: <http://www.faceartistrycosmetics.com>.

Expect 2-4 weeks for your shipment to arrive.